



Integrated Furnace Solutions

www.texplore.co.th



**SPECIALISTS
IN THERMAL
SOLUTIONS**

About Us:

We are a Global Integrated Solutions Provider focused on Products and Services needing Efficiency Improvements, Extended Life, Increased Production Rates, Thermal Protection, Predictive Analysis, Lower CO₂, Lower Thermal NO_x and Reduced Fuel Consumptions within the Fertilizer, Oil & Gas, Petrochemical, Steel and Power Generation Industries.

EMISSPRO R-SERIES

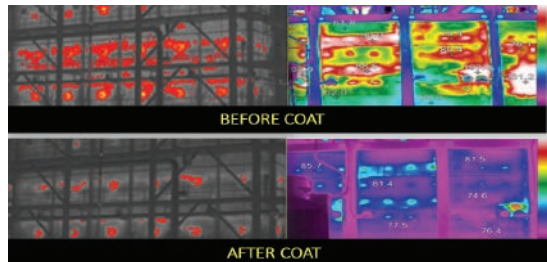


High Emissivity Coating Material Applied to the Internal Surface of Furnace Walls to Yield a Higher Radiant Efficiency

EMISSPRO R-Series Maximizes and Stabilizes the Emissivity Values over varying Process Temperatures, Promoting Rapid and Efficient Heat Transfer, Uniform Heating and Extended Refractory Life.



We Specialize in: Olefin, CCR, Reformers, Ethylene Cracking, CDU's, VDU's & Hydrotreaters, Reheating Furnace.



Why  **?**

- Improves Furnace Thermal Efficiency
- Saves Fuel
- Optimum Capacity Utilization
- Increases Life of the Furnace and Refractory
- Elimination of Hot/Cold Spots
- Coking Reduction
- Reduces Slag Adhesion
- Reduces Thermal NO_x and CO₂ Emissions



EMISSPRO T-SERIES

High Efficiency Tube Coatings

Benefits

- Fuel Savings
 - Increased Tube Life
 - Production Increases
 - Effectively Stops Oxidation and Prevents Scale Growth
 - Increases Furnace Efficiency and Lifetime
 - Maintenance Cost Savings
 - Improves Furnace Reliability
 - Reduced Greenhouse Gas Emissions (CO₂)
-

EMISSPRO T-Series is available for every type of metal substrate such as Carbon Steel, Stainless Steel and High-Alloys used throughout the Power Plant, Petrochemical and Refining Industries.



Before Coating



After Coating



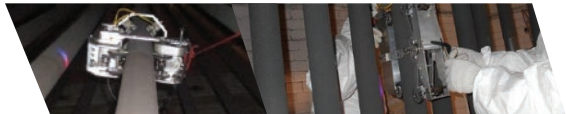


A Coil Inspection Robot for Furnace Tubes

CiBot™ is the first robot to practically measure carburization, bowing, and bulging of furnace tubes in ethylene plants, refineries, petrochemicals, and fertilizer plants.



Why CiBot™ ?



- **Data Quality:** Collect data every centimeter along the tube length.
- **Short Inspection Time:** 7 times shorter than a manual inspection while collecting much-more data.
- **Safety:** No Work-At-Height on Scaffolding and Decreases Time Working within the Confined Space.
- **Enable Optimized Re-Tubing Plan**

Main Features

- Applicable to Tube O.D. 55-196mm (2.5"-8" NPS)
- Minimum Tube Spacing 40mm (1.6")
- Average Inspection Time: 7 minute/tube
- Inspection Resolution: Every 1cm (0.4")
- Collect 1,000+ Data Points per 1 Meter of Tube (3.3ft)
- Preliminary Results could be available within 24 hours after inspection.

THERMO-SCAN SERVICES

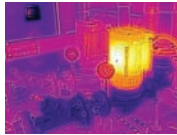
Thermography Inspections within Industrial Plants

Energy Audits, Hot-Spot Detection, Tube & Refractory Condition Scanning, Tube Metal Temperature (TMT) and Tube Skin Temperature (TST) Verification, Mechanical & Electrical System Evaluations, Tank Inspections and Preventive Interruption Service Maintenance Contracts.

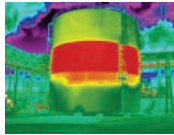
We Service All of Asia, Oceania and India Regions



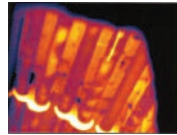
Electrical



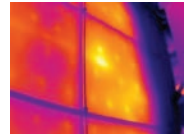
Mechanical



Tank Inspections



Process Tubes



Refractory

We Support Inspections within the Following Plants:

Refineries, Cement & Refractory, PetroChemical, PowerGen, Construction, Mechanical, BioMass, Electrical & Marine Applications.

We Specialize in: Olefin, CCR, Reformers, Ethylene Cracking, CDU's, VDU's, Hydrotreaters and Tanks.



TEXPLORE CO., LTD.
1 Siam Cement Road, Bangsue,
Bangkok, Thailand 10800

FOR MORE INFORMATION:
Tel: (+66) 2 586 2576
Email: contact@texplore.co.th